

Inputs and Outputs (I/O)

What goes in....must come out!



Input and Output Devices

Video on Input and Output Devices

<https://youtu.be/NkoS2JXaBuM>

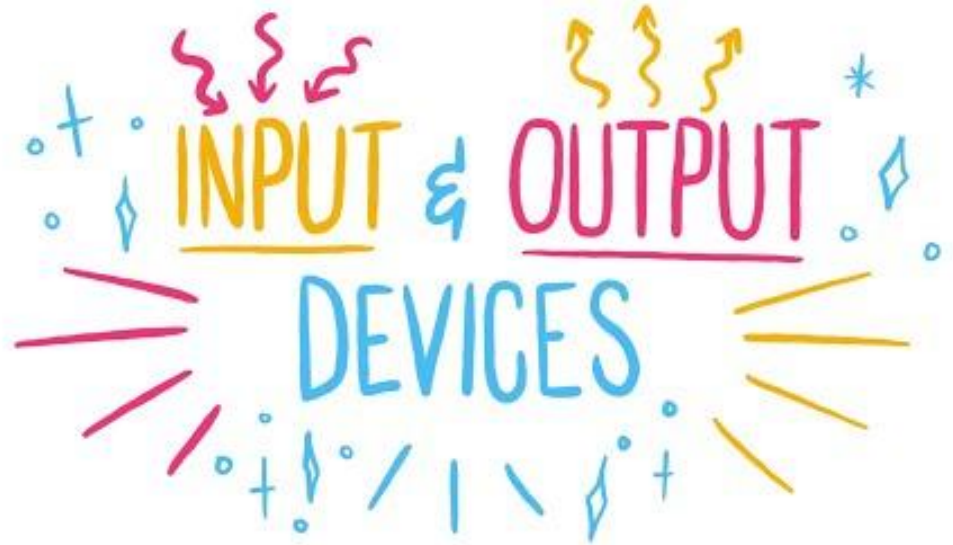


What is an input device?

Give an example of an input device

What is an output device?

Give an example of an output device



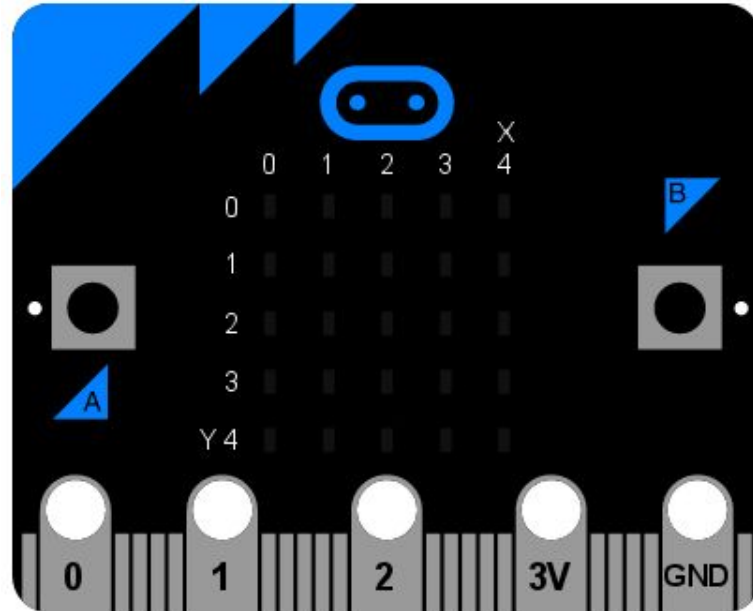
EDPUZZLE

Watch the Edpuzzle and answer the questions.

<https://edpuzzle.com/media/62d073d9fd26d740d9dd512c>

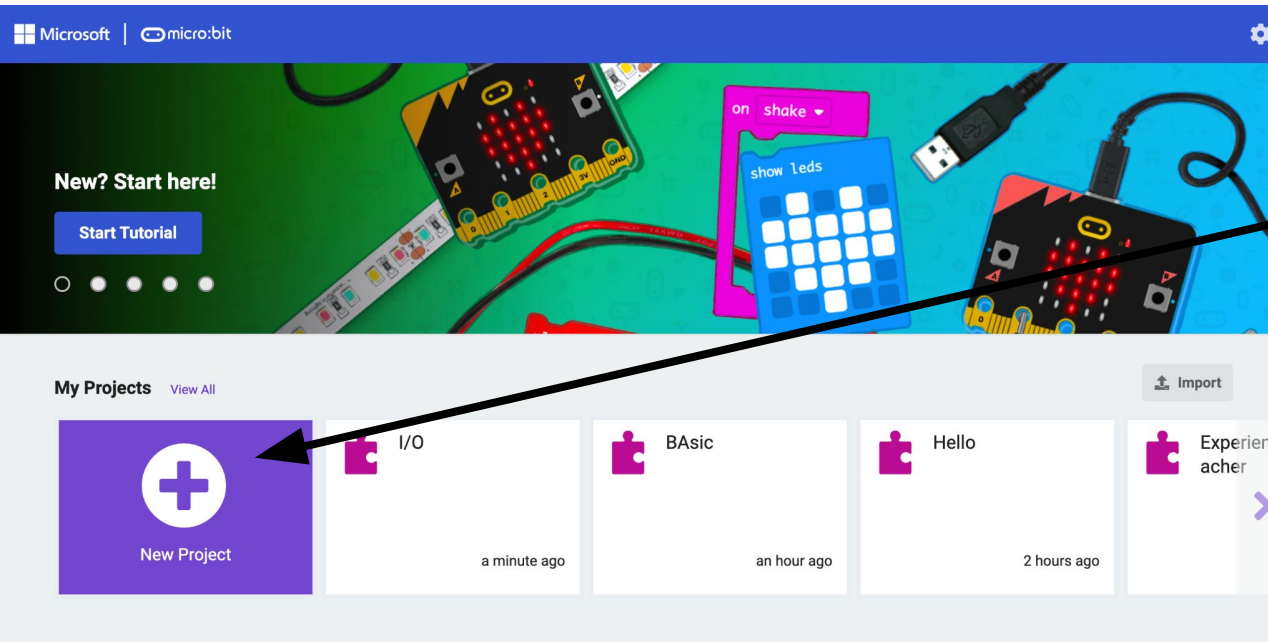
Micro:bit Parts

<https://microbit-micropython.readthedocs.io/en/latest/tutorials/io.html>



Create an Input and view the Output

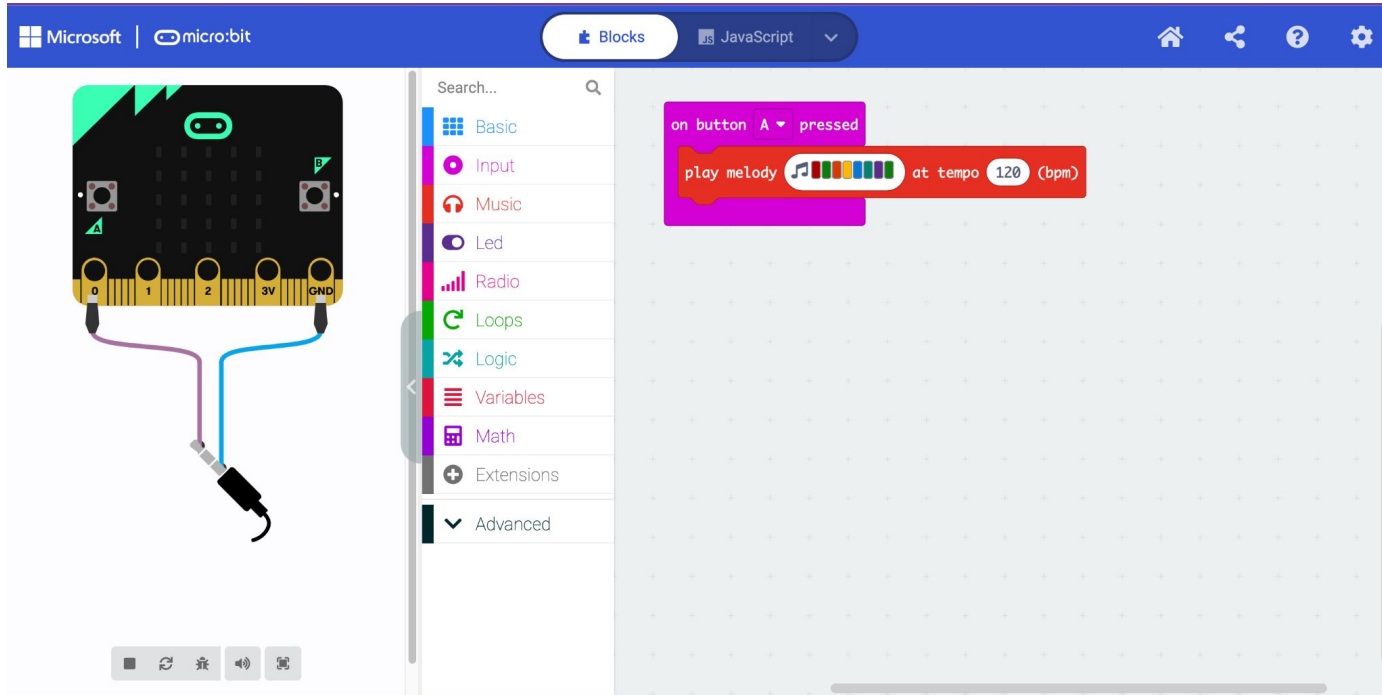
<https://makecode.microbit.org/#> Navigate to Makecode



**Choose a NEW
project**

MakeCode.Microbit.org

Teacher will demonstrate opening INPUT, programming a tune and receiving output



Student's
will practice

Review

What is an I/O?

Typing a computer program is input or output?

Music playing through a speaker is input or output?

The LED lights on a Micro:bit are input or output?

The pins (0,1, 2, 3) on the Micro:bit are input or output?

Pushing the button A on the Micro:bit is input or output?

Your computer monitor is input or output?